

ruck.eu
VENTILATOREN



AXIALINE

POWERFUL | EFFICIENT | ROBUST



AXIALINE

the innovative medium pressure axial fan

Highest efficiency due to:

- CFD optimized 3D impeller and 3D stator blades
- A stator downstream of the impeller increases pressure and efficiency
- Cone hub for optimal incident flow at the impeller

3 motor options

- Highly efficient EC motors
- Efficient, frequency controlled, standard IEC motors
- Certified IEC smoke extract motors

Robust, but light welded construction due to:

- Double function of the stator blades which, in addition to the important aerodynamic function, ensure extreme stiffness of the housing

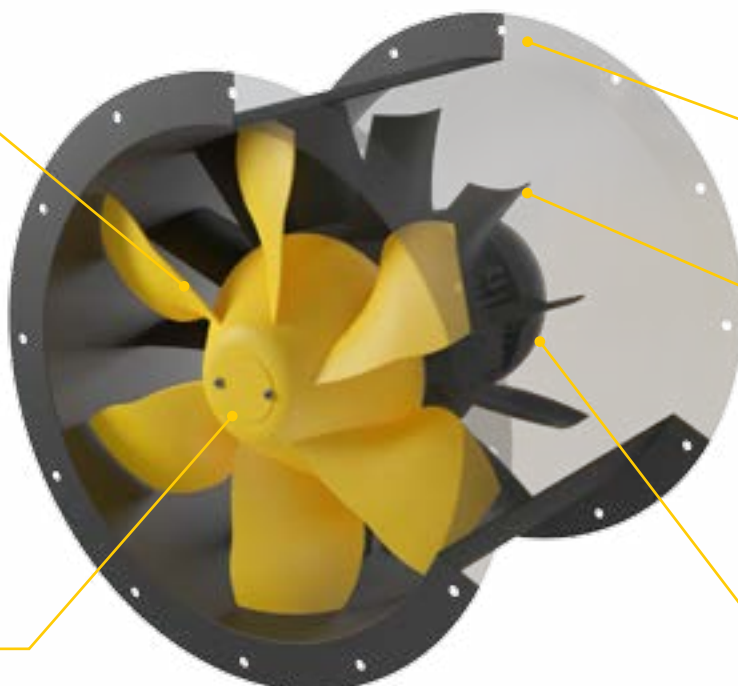
Smoke extract AXIALINE

- It is also certified as a 400 °C / 2 h smoke extract fan, together with an extensive range of accessories



3D impeller, in robust steel design

Cone hub for optimal incident flow at the impeller

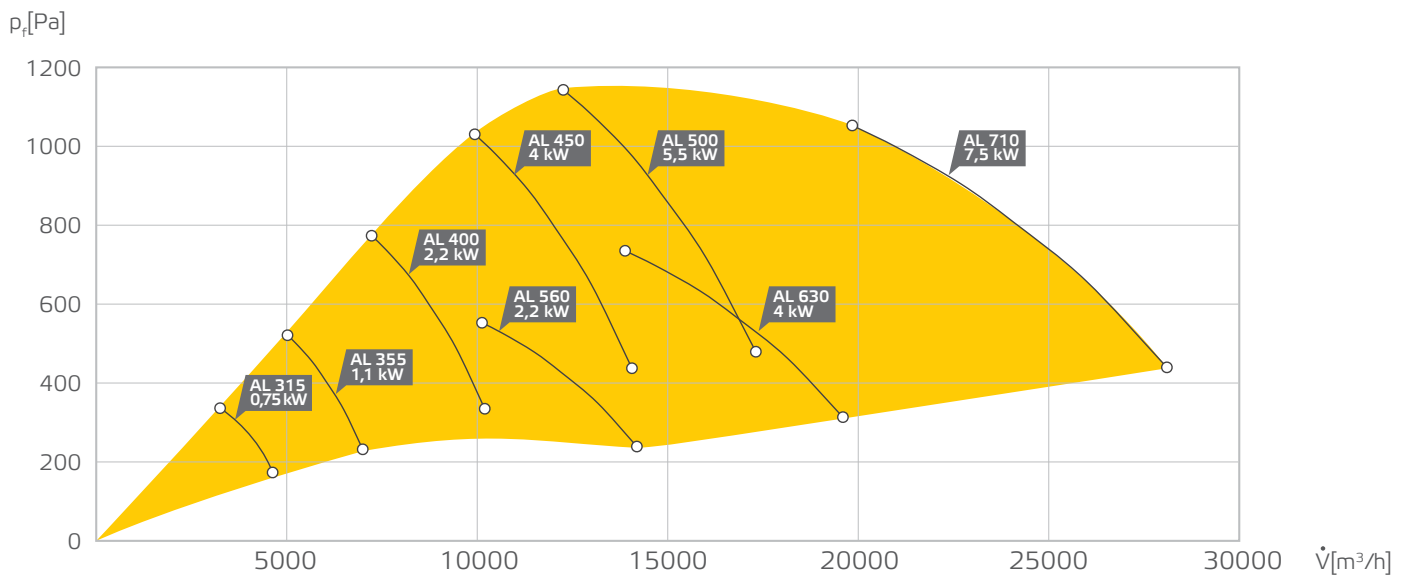


Powder-coated steel housing

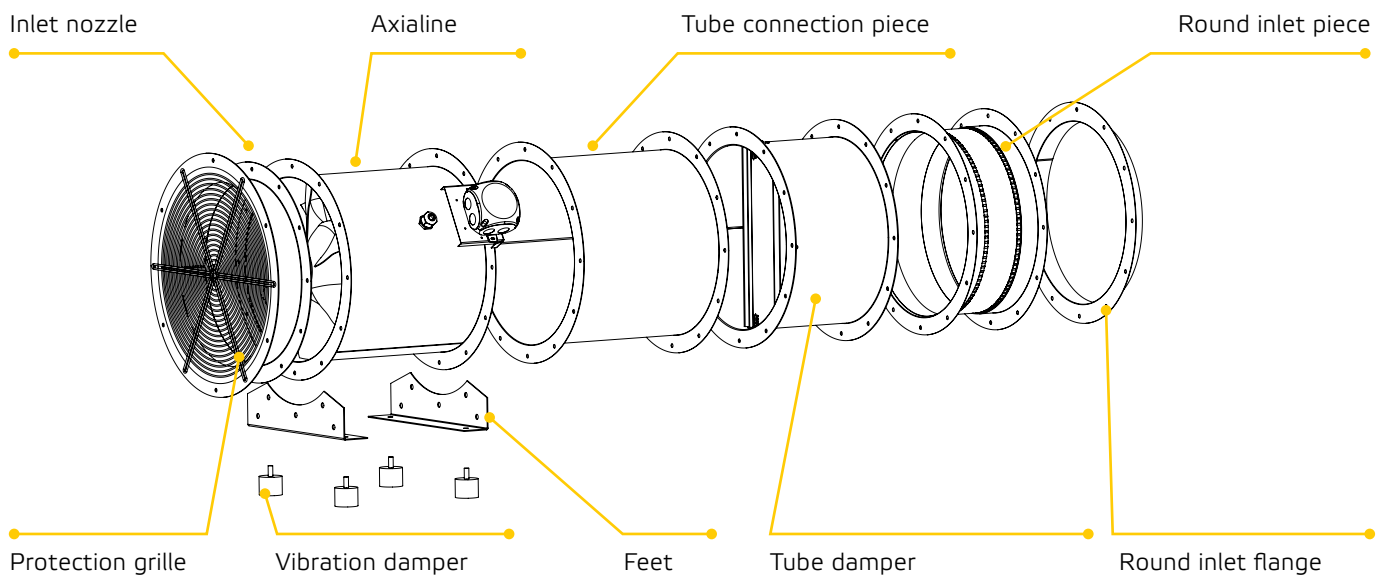
3D stator

Light, but extremely rigid motor support

AIR PERFORMANCE OVERVIEW



MOUNTING EXAMPLE WITH ACCESSORIES



OUR PRODUCT PORTFOLIO

IN LINE TUBE FANS

ETALINE and ETAMASTER, the No. 1 in saving energy.



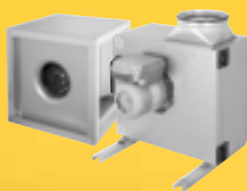
DUCT FANS

Backward curved centrifugal fans, sound insulated, compact diagonal fans.



EXHAUST FANS

Exhaust fans for industry and kitchen exhaust, up to 200 °C continuous operation, 400 °C / 120 min.



ROOF FANS

Roof fans with horizontal and vertical discharge, up to 200 °C continuous operation, 400 °C / 120 min.



COMPACT AHU

With counter flow heat exchanger with more than 90 % heat recovery efficiency and EC fans. Available with horizontal or vertical air guidance respectively flat units for suspended ceiling mounting.



COMPACT AHU

With rotary heat exchanger with up to 80 % heat recovery efficiency and EC fans. Available with horizontal or vertical air guidance.



ruck Ventilatoren GmbH

Max-Planck-Str. 5
D-97944 Boxberg

Tel. +49 (0)7930 9211-300
Fax +49 (0)7930 9211-166

www.ruck.eu
info@ruck.eu

